

Picture. NovotekTrendView in Proficy iFIX. The yellow box shows tag tooltip.

NovotekTrendView is an ActiveX component that extends the number of ways to view trends from Proficy iFIX and Proficy Historian. With its possibility to combine historical data and real time data in the same trend, even for the same pen, it simplifies the overview of data.

## Extends and simplifies the number of ways to view trends

NovotekTrendView has the possibility to combine historical data and real time data in the same trend, hence simplifies the overview of data. By use of chart groups, pen groups and time groups the user can easily choose and customize the needed views of trends.

- ⚙️ **MORE FUNCTIONALITY** than standard iFIX chart e.g. multiple axis, named times, named timespans.
- ⚙️ **COMBINE HISTORICAL TAGS** with real time tags in the same pen for fluent trendline update.
- ⚙️ **INTEGRATES PROFICY HISTORIAN DATA** into 3-part HMI/SCADA/DCS system or other application, e.g. MS Excel or MS Explorer, that supports ActiveX controls.
- ⚙️ **HIGHLY CONFIGURABLE** with configurable sizes on tools, several chart styles etc.
- ⚙️ **HIGH PERFORMANCE** with very fast data access from Proficy Historian.
- ⚙️ **QUICK REAL TIME UPDATE RATES** (up to 10 times/SEC).
- ⚙️ **TOOLTIP WITH TAG INFORMATION** and current value real time update.
- ⚙️ **SELECT TIME AND RANGE** by pulling the X-timeline and Y-value line.
- ⚙️ **CONFIGURATIONS STORED IN XML** for easy deployment and maintenance.
- ⚙️ **USER SECURITY RIGHTS** connectable to iFIX via script allowing user based behavior.



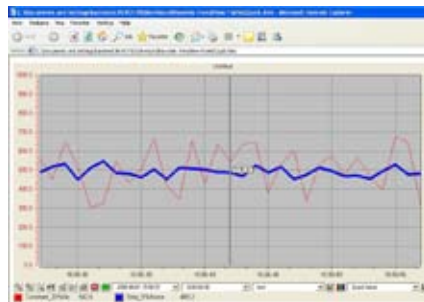
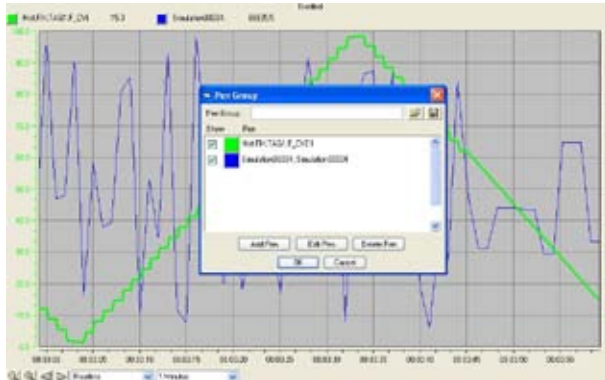
NOVOTEK *TrendView*

### CUSTOMIZE YOUR VIEW

NovotekTrendView can be embedded in any ActiveX container, e.g. Proficy iFIX, Excel or MS Explorer. The charts large number of properties are available for your own customizing. Through a configurable toolbox the most useful functions are available. NovotekTrendView can run directly with Proficy Historian; Proficy iFIX is not mandatory.

### FAST DATA RETRIEVAL

NovotekTrendView is chosen for its very fast data retrieval and display. The system has also flexible tag groups, named times, possibilities to have different chart layouts, called chart styles.



The pictures show examples of NovotekTrendView in Proficy iFIX, MS Excel respectively MS Explorer

### FACTS

NovotekTrendView makes it possible to extend the number of ways to view trends from Proficy iFIX and Proficy Historian. This program can run directly with Proficy Historian however Proficy iFIX is not mandatory.

Novotek AB has specialists in products and open integrated solutions for automation and industrial IT in all lines of business. We supply products, solutions, consulting, support and training with the Proficy-family of products as base.



For more information, visit us at [www.novotek.com](http://www.novotek.com)

**Headoffice Sweden**  
Novotek Sverige AB  
Box 16014  
(Industrigatan 39)  
SE-200 25 Malmö  
Phone +46-40 316900  
Fax +46-40 94 76 17  
E-mail: [info@novotek.se](mailto:info@novotek.se)

**Denmark**  
Novotek A/S  
Naverland 2  
DK-2600 Glostrup  
Phone +45-43 43 3717  
Fax +45-43 43 5225  
E-mail: [info@novotek.dk](mailto:info@novotek.dk)

**Finland**  
Novotek Automaatio Oy  
P.O. box 230  
Torpankatu 28  
FI-05801 Hyvinkää  
Phone +358 19 87 1131  
Fax +358 19 87 11 300  
E-mail: [info@novotek.fi](mailto:info@novotek.fi)

**Benelux**  
Novotek B.V.  
Paardeweide 2  
4824 EH Breda  
Phone +31-76 587 10 10  
Fax +31-76 581 01 11  
E-mail: [info@novotek.nl](mailto:info@novotek.nl)

**Norway**  
Novotek AS  
Torsvangs industriområde  
NO-3255 Larvik  
Phone +47-331 658 00  
Fax +47-331 658 01  
E-mail: [info@novotek.no](mailto:info@novotek.no)

**NOVOTEK**  Improving your performance