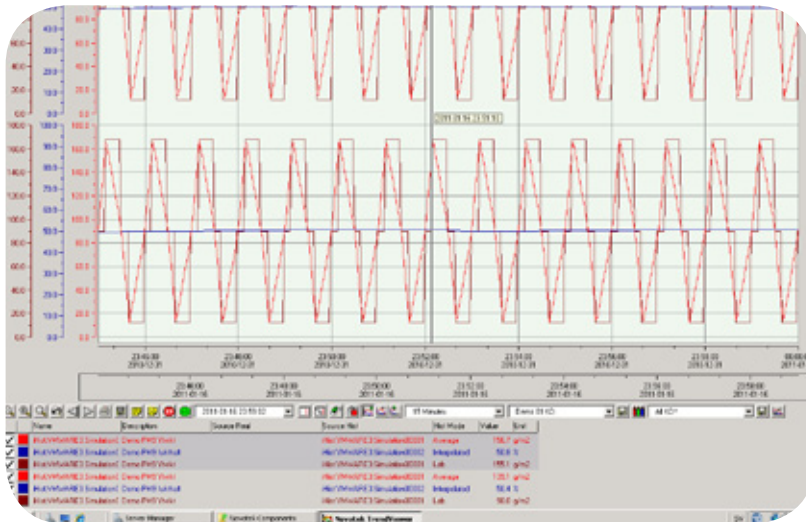


One flexible easy-to-use trending tool compiles multiple data sources into customized views.



NovotekTrendView is a high performance tool that extends the number of ways to view trends from multiple sources like OPC realtime and historical data servers, Proficy iFIX, Proficy Historian, Proficy Plant Applications and SQL Servers.

## KEY TECHNICAL BENEFITS

Flexible usage, as stand-alone program or incorporated into your favorite program as an Active-X component.

Multiple data sources including OPC DA and HDA, Proficy iFIX realtime data, Proficy Historian, Proficy PA, SQL sources supporting stored procedures and text data.

Easy-to-use, with user named times, time spans, pens, pen groups and chart styles.

Customizable views including multiple axis, stacked pen groups and axis, horizontal or vertical trending, reversed trending, pen indicators, time trends and XY-plots.

Highly configurable with remote configuration file support, national language support, configurable sizes on tools, several chart

styles, calculated pen values, pen indicators etc

Intuitive interaction with tooltips, locking timescales, modifiable legends, one-click hiding of tag, select time and range by pulling the X-timeline and Y-value line, zoom in and out.

Fluent trendline update by combining historical tags with real time tags in the same pen.

Methods and properties accessible for extensive scripting and customization.

Annotation support for Proficy Historian, Proficy PA and SQL Server.

Several tracking modes for fluent, stepwise or fixed step update of chart.

Match historical data with real-time data for "Golden batch" comparison.

NovotekTrendView has the possibility to combine historical data and real time data from multiple sources in the same trend, hence simplifies the overview of data. It is optimized on speed, both in getting started and in handling data. By use of chart groups, pen groups and time groups the user can easily choose and customize the needed views of trends, in their right context. NovotekTrendView can be run as a standalone program or embedded into your favorite program as an Active-X component.

## FEATURES AND FUNCTIONS

### Customize your view

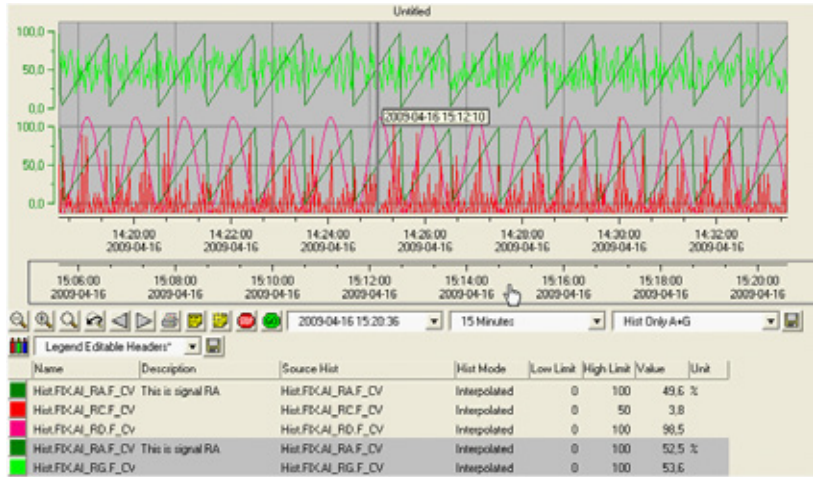
The size and looks of the trending charts are highly configurable. You can define legend of tags and what parts are to be modifiable in runtime and by whom. Through a configurable toolbox the most useful functions are available. Many

are the ways functions can be handled e.g. choose start time by setting a fixed or relative time or use your own named times. Set a standard or user-defined time span. Pick a tag group to view or even compare two tag groups with different times for e.g. “Golden Batch”-analysis. Select chart style, that can be user-customized e.g. with large button icons and text. Investigate information by zoom in or out, print or export data. Read or add comments as annotations to data points. Change update behavior by defining tracking mode and tag time synchronization. Work with the legend in runtime, e.g. hide and unhide tags or change historical mode. Drag the mouse over a pen and see the pen tooltip information. And much more.

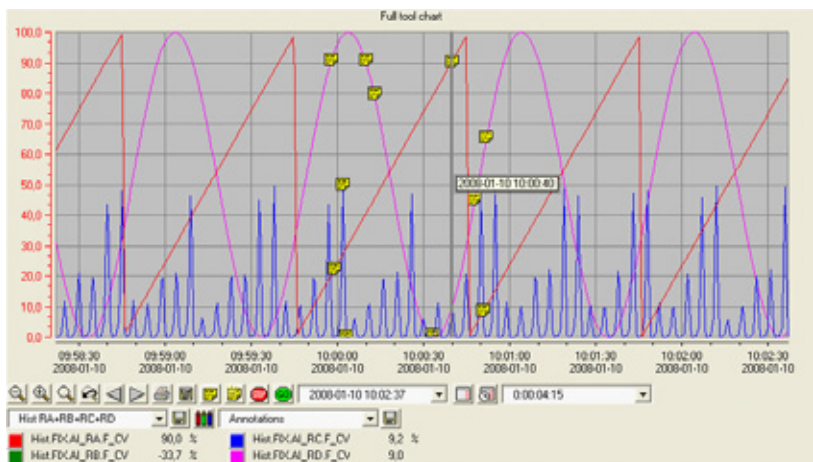
The charts large number of properties are available for your own customizing. User security rights can be connected to Proficy iFIX allowing user based behavior.

**Highly flexible**

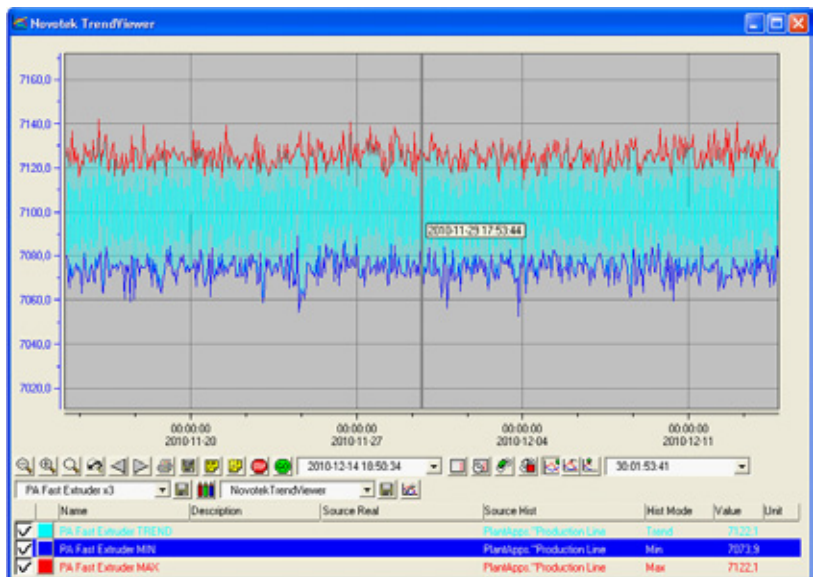
The flexibility of NovotekTrend-View is very high; it is a tool to compile trend information from all your systems into one environment. It can be run on Windows based computers either as a separate program or embedded in any ActiveX container, e.g. Proficy iFIX, Excel or MS Explorer. NovotekTrendView can run directly with one or many of the sources; Proficy software is not mandatory. Client Access licenses might be needed depending on source.



Multiple pengroups with stacked axis can be used for comparing current run against a perfect production run.



Annotation are comments to historical data, these can be added and viewed in NovotekTrendView.



The separate program NovotekTrendViewer can be parameterized to start up with preferred settings.