



Proficy* Change Management and Proficy Machine Edition

Proficy Change Management from GE Intelligent Platforms provides the functionality to manage and maintain programs and projects in a manufacturing environment. Using version control, security, audit trailing, and scheduled verifications, you can get a handle on what's happening in your plant.

Proficy Change Management provides the ability to increase plant uptime by ensuring backups are available in the event of an emergency and by helping prevent user errors. It can also help meet regulatory requirements by providing security and detailed auditing. You can improve safety and maintain product quality by tracking and detecting unauthorized changes to control programs before they become a problem.

Because Proficy Change Management and Proficy Machine Edition are built on the same technology, the combination provides a more comprehensive solution. Proficy Change Management automatically supports any Machine Edition based product. This includes Proficy Logic Developer, Proficy Motion Developer and Proficy View.

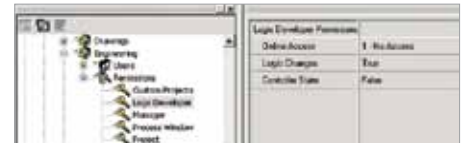
In addition to the standard functionality, Proficy Change Management offers detailed security and audit trailing for Machine Edition components.

Security

Proficy Logic Developer users get detailed security settings that allow control over what functions each user or group of users is allowed to perform on the controllers. These include:

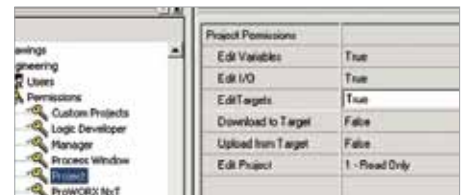
Online Access – This can be configured for “No Access”, “Monitor Only”, “Data Changes”, or full access.

Logic Changes – Controls whether or not the current user is allowed to edit the logic portion of the control.



Controller State – Controls whether the user can start/stop the controller. In addition to these permissions, there are several general Machine Edition permissions that allow you to control the common project functions.

Edit Project – Controls what level of changes a user can perform on the offline files, and can be set to “Read Only”, “Edit Documentation”, or “Full Access.”



Edit Variables – Controls whether or not the user is allowed to edit the variable lists. (i.e., add, create or delete).

Edit I/O – Controls whether or not the user can modify the I/O configuration for the project.



Proficy* Change Management and Proficy* Machine Edition

Edit Targets – Controls whether or not the user can change, insert or delete targets (i.e. PLCs) from a project.

Download to Target – Controls whether or not the user is allowed to download to a device.

Upload from Target – Controls whether or not the user is allowed to read from the device.

Audit Trails

Proficy Change Management also tracks changes to Machine Edition projects as they are made and records them to the audit trail. By default, as projects are checked out, opened, checked in, etc., the audit trail logs the date, time, user, project, action, and any comments. Some of the modules will actually provide more details on changes. This allows the system to record what the user was doing while editing the project. Some core information is recorded for all products, and some is specific to each module.

Variable Changes – Audits database changes, including tag creation, deletion or attribute changes.

I/O Changes – Logs changes to the I/O Configuration (Proficy Logic Developer PC Only).

Documentation Changes – Records changes made to the logic documentation in the audit trail (Proficy Logic Developer PC Only).

Online Data Changes – Records changes made to the data registers online to the audit trail system (Proficy Logic Developer PC Only).

Online Force Changes – Logs any online forces to the audit trail (Proficy Logic Developer PC Only).

Download – Logs when a user downloads a project to a target (Proficy Logic Developer, Proficy Motion Developer, Proficy View, etc).

Proficy Logic Developer PC

With the Proficy Logic Developer PC product, Proficy Change Management records detailed changes to the audit trail. This includes tracking of Logic Changes (i.e., Rung 5 inserted), Bookmarks, and controller parameters.

Scheduled Compare and Upload

Use the Proficy Change Management Scheduler to ensure that the logic and data in your controller matches the master version on the server. The Scheduler allows you to create events that will run automatically on a regular basis and allows you to read the PLC, compare against the master, and back up any changes in the PLC automatically. It can also be configured to notify you via email that a difference has been found, so you can identify unexpected changes before they become a problem.

Centralized Toolchest

Proficy Change Management provides version control and central storage of the Toolchest. This ensures that any custom blocks, instructions, and other library information that users create can be version controlled and stored on the server to ensure everyone is using the same version of the Toolchest objects.

Up Front Management

Proficy Change Management and Machine Edition provides a more proactive approach to managing changes to GE PLCs and other Machine Edition components. Machine Edition is automatically locked down when configured to work with Proficy Change Management. It does not allow a user to run the Proficy Logic Developer editor without logging into the Proficy Change Management Server. As a result, it is not likely that anyone can make a change to the PLC without the system knowing about it. Rather than finding out after the fact using the scheduler, the system will know about it as it happens.

About GE Intelligent Platforms

GE Intelligent Platforms, a General Electric Company (NYSE: GE), is an experienced high-performance technology company and a global provider of hardware, software, services, and expertise in automation and embedded computing. We offer a unique foundation of agile, advanced and ultra-reliable technology that provides customers a sustainable advantage in the industries they serve, including energy, water, consumer packaged goods, government and defense, and telecommunications. GE Intelligent Platforms is a worldwide company headquartered in Charlottesville, VA and is part of GE Home and Business Solutions. For more information, visit www.ge-ip.com.

GE Intelligent Platforms Contact Information

Americas: **1 800 433 2682** or **1 434 978 5100**

Global regional phone numbers are listed by location on our web site at www.ge-ip.com/contact

www.ge-ip.com

