

# SUPERVISION

Stay on top of your shop floor with dashboards, smart CVE management, and seamless backup insights straight from octoplant. Everything you need - right where you need it.

## + Centralized Visibility and Control for Industrial Environments

Octovision acts as a centralized data hub, consolidating critical shop floor information into a unified, easy-to-navigate interface. Built on a scalable, modern architecture, it supports flexible deployment models - including on-premise and cloud\* - ensuring seamless integration into diverse IT/OT infrastructures.

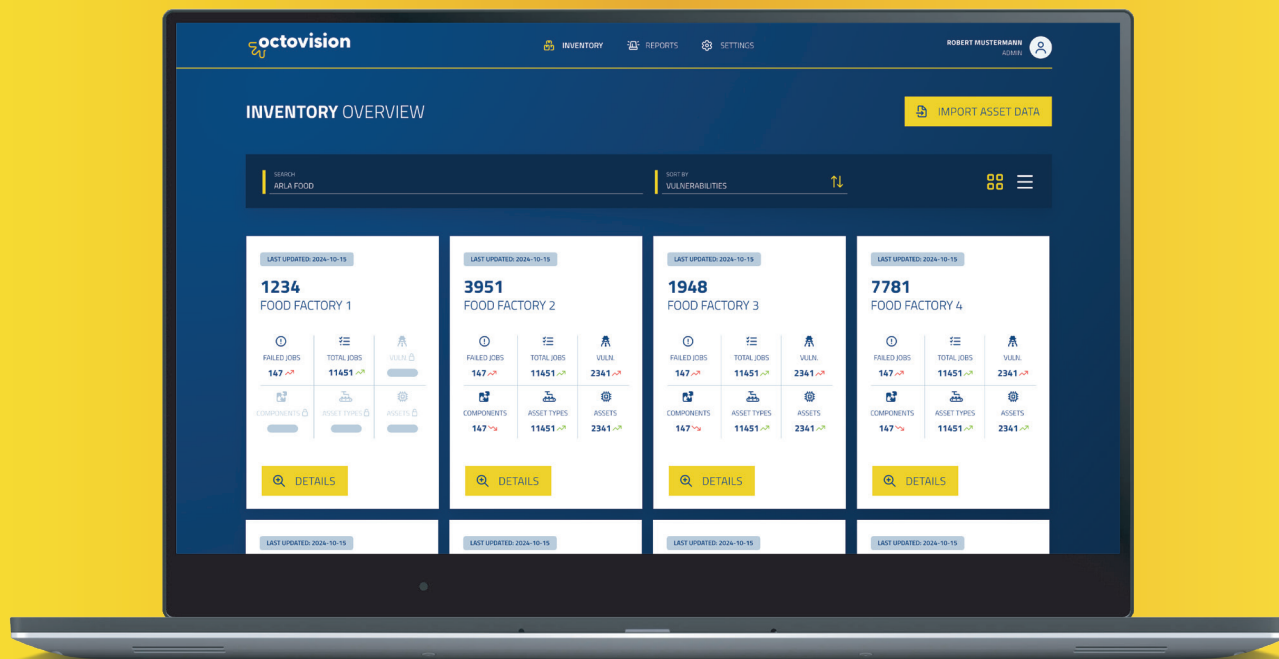


Designed to support enterprise-grade operations, octovision delivers pre-configured reports for key operational metrics, offering deep visibility into components, job execution, asset inventory, and known vulnerabilities (CVE).

The platform enables cross-site monitoring, standardized reporting, and data-driven decision-making, helping teams reduce risk and optimize system uptime. Whether you're managing a single plant or a global network, octovision ensures all critical data is accessible, secure, and actionable from a single point of control.

# SHOPFLOOR INSIGHTS

Comprehensive visibility into your shop floor with data on assets, job statuses, and component usage. Built on a centralized architecture, it enables cross-site monitoring and data-driven decision-making for optimized operations.



Everything  
in one view

+ Instantly access CVEs, assets, jobs, and components – all in a single, centralized interface. With octovision, there's no need to juggle between different tools or systems. All relevant data is consolidated, making it easy to manage vulnerabilities, monitor assets, and oversee system health in one glance. Save time, reduce friction, and empower your team to act faster and more confidently.

Stay ahead  
effortlessly

+ Octovision features a modern, intuitive web-based interface combined with AMDT's rapid innovation cycles – ensuring you're always equipped with the latest functionality and protection. Updates are frequent, seamless, and hassle-free, allowing you to focus on your priorities while the platform keeps pace with evolving cybersecurity threats, including always updated visibility into CVEs.

# SHOPFLOOR INSIGHTS

Comprehensive visibility into your shop floor with data on assets, job statuses, and component usage. Built on a centralized architecture, it enables cross-site monitoring and data-driven decision-making for optimized operations.

## See the big picture

- + Gain instant visibility across your entire operational technology (OT) landscape. Pre-built dashboards and reports deliver clear, actionable insights into vulnerabilities, asset lifecycle, and system performance across all your locations. It's the ideal foundation for driving enterprise-wide security policies and aligning stakeholders with a unified strategy.

## Make reporting yours

- + Customize your reporting to reflect the structure, goals, and workflows of your organization. Whether you need to analyze risks by site, region, or device type, or generate reports tailored to your mitigation plans and audit cycles – octovision makes it simple to design views that work the way you do.

## Connect what matters

- + Data shouldn't be trapped in a silo. Octovision makes it easy to export information via CSV and JSON, or leverage our open API to connect with your SIEM, CMDB, ticketing, or analytics tools. Build the integrations that matter most to your operations and automate data flows that enhance decision-making.



# CVEs INSIGHTS

Octovision delivers comprehensive visibility into your shop floor with data on assets, job statuses, and component usage. Built on a centralized architecture, it enables cross-site monitoring and data-driven decision-making for optimized operations.

**Built to protect,  
not disrupt**

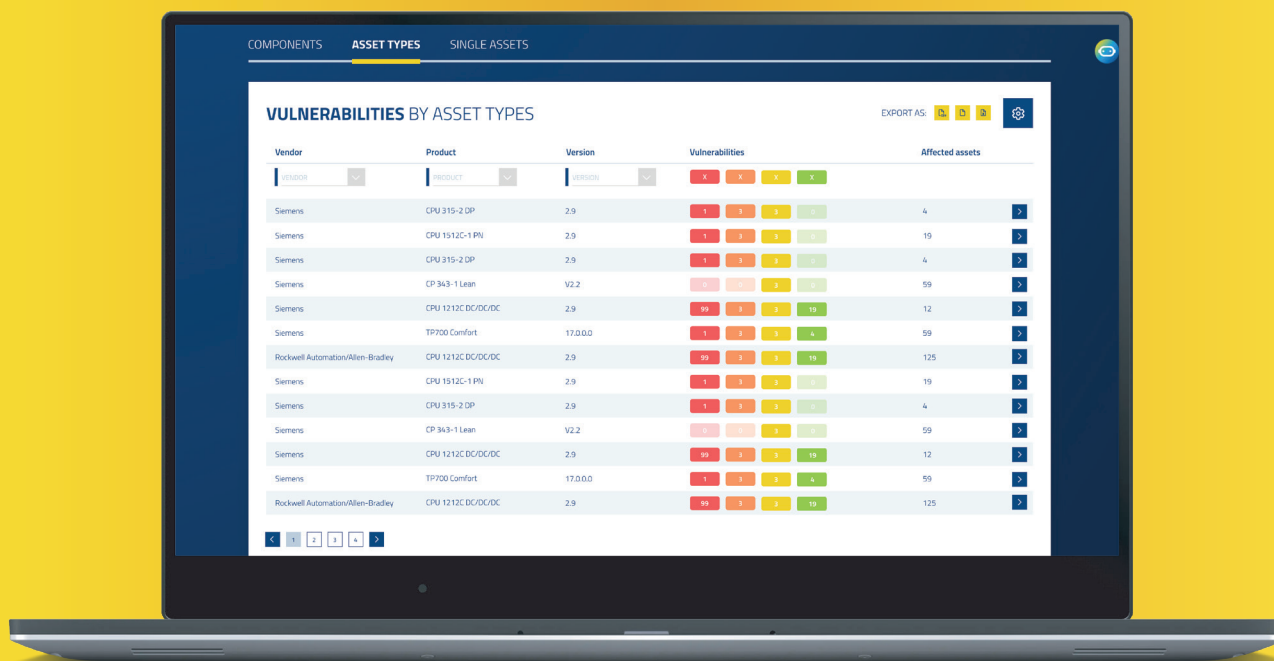
+ Octovision delivers vulnerability insights without interfering with your operations. Unlike traditional solutions, it doesn't rely on active or passive scanning – ensuring that sensitive, legacy systems remain untouched and fully operational. Our project based and secure approach lets you gain visibility into potential threats while maintaining the integrity of your OT environment.

**Designed  
for your team**

+ Whether you're a CISO shaping enterprise-wide security strategy or a maintenance engineer responsible for equipment uptime, octovision speaks your language. Role-specific views and intuitive dashboards deliver relevant insights to every team member, enabling smarter, faster decisions at every level of your organization.

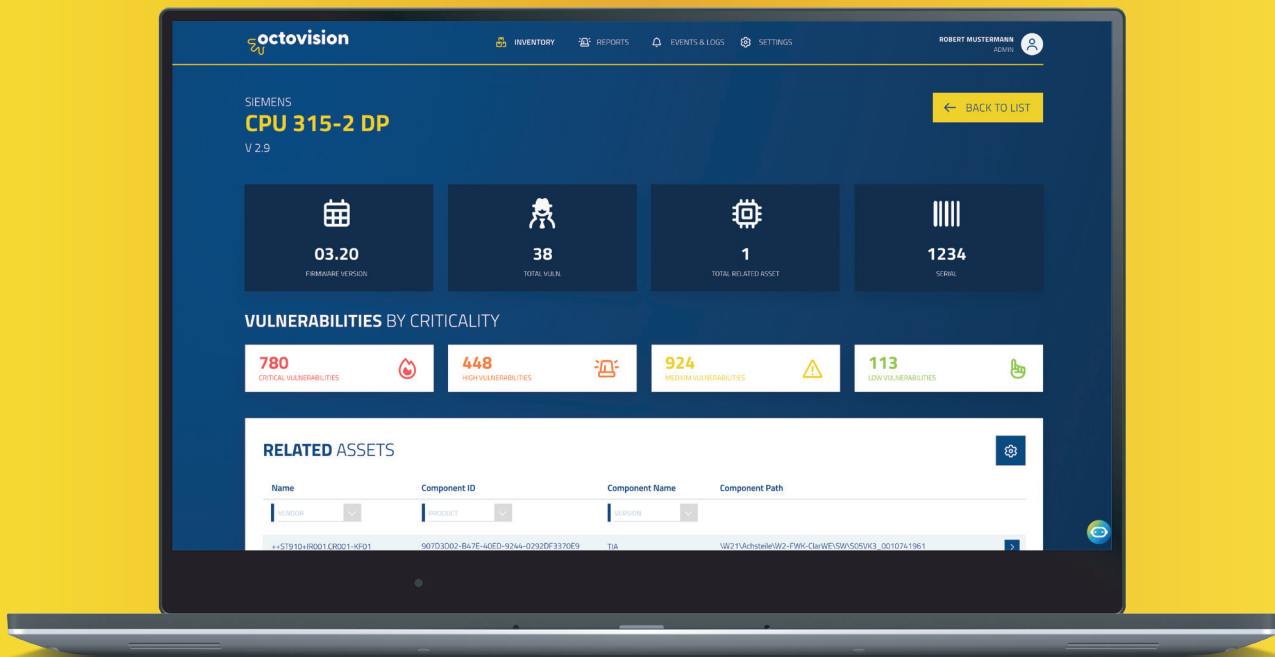
**Plays well  
with others**

+ Already using cybersecurity software? No problem. Octovision integrates smoothly into your existing ecosystem without creating conflicts or redundant workflows. It complements your current stack, enhancing your visibility and prioritization without replacing tools you rely on.



# CVEs INSIGHTS

Octovision delivers comprehensive visibility into your shop floor with data on assets, job statuses, and component usage. Built on a centralized architecture, it enables cross-site monitoring and data-driven decision-making for optimized operations.



## Focus on what matters

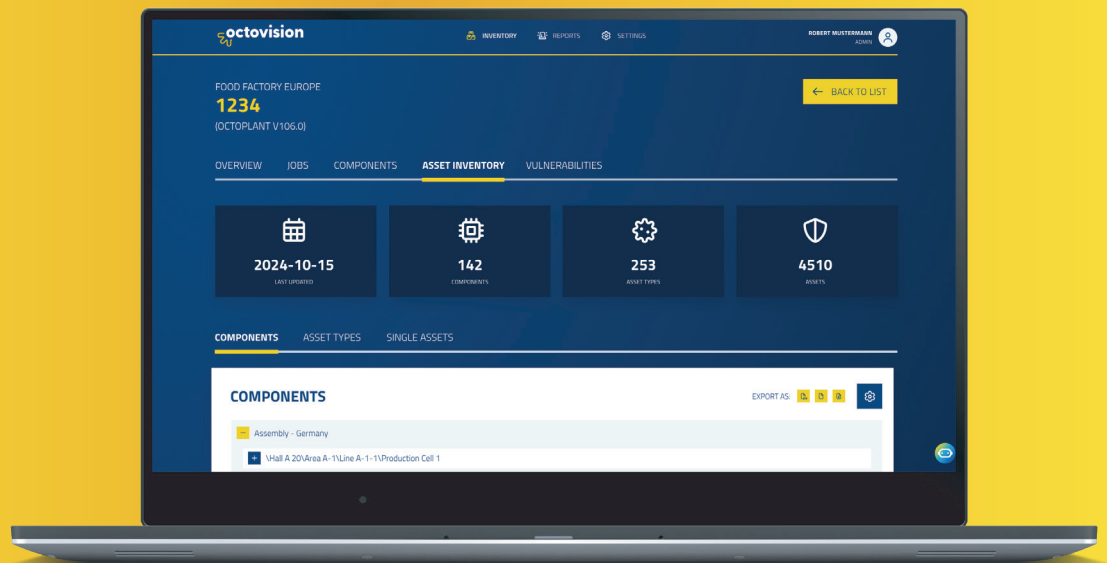
- + Not all CVEs are created equal. Octovision uses risk scoring to help you prioritize the vulnerabilities that pose the greatest threat to your operations. By filtering out the noise and zeroing in on high-impact issues, your team can focus resources where they matter most – protecting uptime and minimizing risk.

## Act with confidence

- + When a threat is identified, octovision doesn't just flag it – it helps you respond. AI-powered guidance provides actionable steps based on best practices and industry standards, supported by rich references and contextual data. Whether planning mitigation or preparing for audit, you'll always know the next best move.

# ASSETS INSIGHTS

Octovision gives you a clear, risk-free view of your OT environment by analyzing project data without touching live systems. Understand what's running, where it's running, and how to act - quickly and confidently.



## Independent analysis



Octovision uses octoplant as a source of data for a comprehensive analysis of your asset data without touching live devices or disrupting your production network. By relying on project and configuration data from octoplant's core system, it delivers valuable insights with zero operational risk - perfect for environments with sensitive or legacy systems that can't tolerate intrusive scans.

## Clarity about your assets



Gain a clear and structured overview of the most important attributes of your OT assets, including vendor names, device types, firmware versions, and more. Octovision translates complex data into a format that's easy to understand and act upon, enabling faster diagnostics, improved planning, and better-informed decisions.

## Focused reporting on most relevant assets



Quickly generate user-defined reports that highlight the assets that matter most - whether it's for an upcoming maintenance window, risk review, or audit preparation. Filter and sort your data based on priority, location, or device type to get a tailored view that supports proactive planning and minimizes downtime.

## Known structure and overview as it is in octoplant



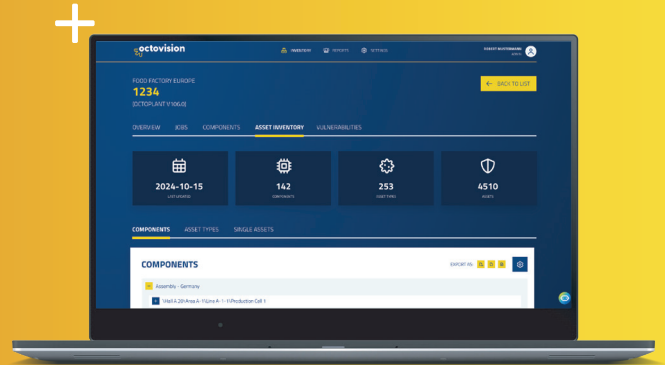
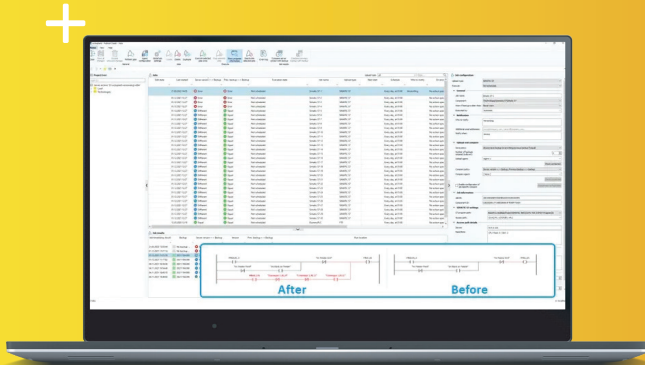
Switch seamlessly between octovision and octoplant's core system. Asset data is organized using the familiar project tree structure, making navigation intuitive and consistent for users already working within octoplant. This unified experience ensures smooth adoption and eliminates the need for retraining or reorientation.

# OCTOPLANT ECOSYSTEM

Octovision is a fully integrated part of the octoplant ecosystem, extending its capabilities with powerful, non-intrusive insights - seamlessly aligned with your existing workflows and data structure.

 **octoplant**

 **octovision**



**One ecosystem**

Zero extra work. Fully aligned with octoplant - no duplication, just seamless synergy with simple install package.

**Deploy your way**

On-prem, cloud, or SaaS - Octovision fits your infrastructure, not the other way around.

**Octoplant is the established industry standard for storing, versioning, and comparing entire production environments, providing fast recovery and protection against unwanted changes.**

Octoplant provides enhanced management of 160+ of the most common OT and IT related IT vendors in multiple versions and protocols, including decades of backwards compatibility.



**ABB**

**rexroth**  
A Bosch Company

**Rockwell Automation**

**SIEMENS**

**AVEVA**



**WAGO**

**PHOENIX CONTACT**

**MITSUBISHI ELECTRIC**

**KEYENCE**

**Atlas Copco**

**HIRSCHMANN**

**YASKAWA**

**BECKHOFF**

**KUKA**

**KISTLER**

**COGNEX**

**SEW EURODRIVE**



**Schneider Electric**

**EMERSON**

**Acronis**

**COPADATA**

**CISCO**

**OMRON**



**Lenze**

**FANUC**

**AMDT is the global leader in backup, version control, and comparison solutions for industrial automation, built on nearly 40 years of specialized expertise.**

Our mission, "Production Resilience Delivered," reflects our commitment to ensuring that automated production systems are secure, resilient, and capable of fast recovery from disruptions, thereby safeguarding production output. Established in 2022 through the merger of AUVESEY GmbH and MDT Software Inc., AMDT is headquartered in Landau, Germany, with offices in the USA and China. Our extensive global network includes over 100 partners, and we proudly support more than 3,000 customers worldwide, helping them maintain optimal performance and resilience in their production environments.

**[www.octoplant.com](http://www.octoplant.com)**

