

PROFICY SCHEDULER / ROB-EX V7.4



Achieve dynamic and efficient production schedules in real time to improve customer satisfaction and productivity

Optimize with a graphical planning tool for finite capacity scheduling

Fed up with rescheduling, bottlenecks, overtime, and delayed deliveries?

Proficy Scheduler, part of the Proficy MES family, enables companies to create and maintain dynamic and efficient production orders in real time based on resources and asset capacity.

This modular production scheduling system can be used as a complete standalone planning solution or integrated easily with ERP and MES. Proficy Scheduler tracks production orders and, as the orders execute, tracks actual measured production, consumption, waste, and yields, updating ERP and MES systems automatically. It also provides reports and analysis tools.

By offering an interactive web-based graphical view of the production plan across the plant, Proficy Scheduler allows planners to easily schedule and execute production orders then monitor the progress to ensure more efficient production operations. It also combines local scheduling and central multi-site planning as well as enables multiple users to work simultaneously from the same plan. With Proficy Scheduler, you can achieve valid schedules checked against finite capacity and materials availability, improving capable-to-promise with reliable delivery dates.

OUTCOMES

- Optimize and balance the production schedule with materials, energy, labor, equipment, and delivery times
- Reduce order lead time up to 40%, work in progress up to 15%, and overtime up to 35%
- Improve plant utilization of capacity up to 20%
- Increase production output on the same equipment up to 7%
- Decrease time spent on production planning by an average of 50%
- Achieve top- and bottom-line impact: improved customer satisfaction and operations productivity
- Increase inventory turns / turnover
- Achieve a noticeable reduction in costs related to wages/salary, financing, penalty payments, sub-suppliers, and materials

01 Better accommodate variations to improve production performance

Helping to improve both the top and bottom lines by shortening lead times, Proficy Scheduler minimizes the effects that result from accommodating variations and enables rescheduling based on capacity changes. Proficy Scheduler provides automated rules and easy-to-configure routes and resources to offer an integrated view of plant resources to efficiently respond to production changes.

02 Facilitate production routings

By offering both forward and backward planning, Proficy Scheduler facilitates the configuration of product routings and resources (staff, materials, equipment) for short-, mid-, and long-term planning.

Proficy Scheduler helps users execute scheduling changes quickly and accurately to avoid planning errors and long lead times. It obtains orders and bill of materials (BOM) from the ERP system then optimizes and balances production plans with available resources.

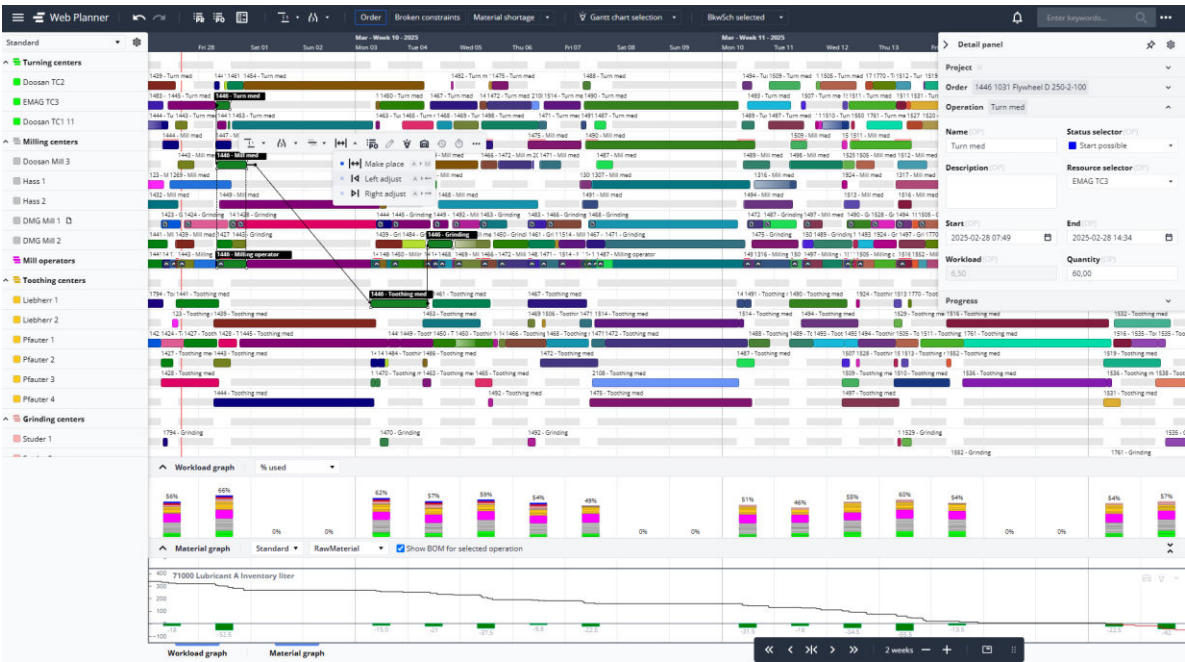
03 Prevent bottlenecks and material shortages

Avoid delays by having Proficy Scheduler adjust resources in advance. For fully integrated solutions, Proficy Scheduler can also alert the ERP system to make the necessary changes in resources and materials.

Proficy Scheduler provides actual production, consumption, and events information plus the impact on schedule adherence. By better forecasting order completion times, Proficy Scheduler easily maps current situations with production schedules to optimize and meet customers' expectations.

04 Open & layered solution

“What-if” simulations provide visualizations of the impact on load factors if certain activities change. Proficy Scheduler helps companies maintain work-in-progress (WIP) schedules by showing how raw materials will deplete during a production schedule and finished goods inventory levels at any given time in the production run.



Proficy Scheduler helps manufacturers utilize their equipment, labor and materials optimally to drive reduction in lead times and production costs

05 Improve collaboration across teams

For information where and when you need it, Proficy Scheduler allows access through several clients. In addition to the planner, Proficy Scheduler includes viewer read-only access. Viewers have the same access as the planner but without the ability to edit the plan.

Additionally, a Web browser application for tablets and smartphones allows the remote operator access to on-line job lists to monitor production progress, view the status of activities, and report on the status of each job, which updates the planner real time. This allows the planner to make on-the-spot adjustments and updates to the plan.

“We have increased our capacity approximately 20% by using the GE Vernova software, especially the planning tool. We have less gaps between the process orders, which means decreased lead times for the customer.”
- KajsaLake, Supply Chain Manager, Nouryon

PROFICY SCHEDULER / ROB-EX V7.4



Achieve dynamic and efficient production schedules in real time to improve customer satisfaction and productivity

Features

New in Version 7.4

- Project, Production Order and Operation data is now automatically copied to history tables in a BI friendly format.
- A new scheduling option "Minimize lead time" will allow customers to reduce the lead time of production orders.
- New web-based Shop Floor client with integrated time tracking
- Security enhancements and update of Java to v17
- New minimize lead time feature to reduce floor inventory
- Use Bottleneck Sorting to adjust previous and subsequent operations with respect to the selected bottleneck operation

New Web Planner

- Create/Edit Master data like Resources, Calendars, Resource Views, Master Operations, Master Routes, Master Materials, Warehouses, Product Families and Safety stock values (min/max limits)
- Also adding and editing material transactions (counting's, purchase orders, shipments, BOM lines) is supported. Including showing resulting inventory in a material transaction list.
- Change status on a group of orders at the same time
- New option at add/remove sub-order links
- Ability to call a macro with meta data on selected order or operation



With web-based scheduling and mobile dashboards, Proficy Scheduler helps planners execute their scheduling plans with confidence, ease and full visibility of the impact of their decisions

For detailed Hardware and Software Requirements, please consult the [product documentation](#).

NOTE:

In December 2024, GE Vernova completed the acquisition of ROB-EX A/S. The ROB-EX product has been offered as a part of GE Vernova's Proficy portfolio for the past 15 years and is now fully integrated in the Proficy® family from GE Vernova.

ROB-EX SCHEDULER IS NOW PROFICY® SCHEDULER / ROB-EX.

Create and maintain dynamic and efficient production orders in real time based on resources and asset capacity with Proficy Scheduler / ROB-EX

[LEARN MORE](#)